



## AJEL® MASK

**제품 설명**  
Product Description

별물추출물, 알라신, 시비콜(마치란)추출물, 수딩글리콜릭스 등이 피부 진정에 도움을 주며, 5종 히알루론산 및 세라미드가 피부 보습에 도움을 줍니다. 마스크 및 클렌저에서 각을 사용 후 마무리 단계에서 사용하는 에스테틱 전용 마스크입니다.

Enriched with Centello Asiatico Extract, Glycer Water, Portulaca Ceratolo Extract, and a soothing cooler complex, effectively soothes the skin. The combination of 5 types of Hyaluronic Acid and Ceramide helps moisturize and restore the skin. This aesthetic-exclusive mask is designed for use at the finishing stage after various procedures in aesthetics and clinics.

**용량**  
Package

30ml / 1.01fl.oz.

**사용방법**  
How to Use

1) 세안 후 토너로 피부관을 청결제합니다. 2) 시트를 꺼내어 얼굴 전체에 고르게 밀착시킵니다. 3) 10-20분 후 시트를 떼어내고 피부 위에 남은 내용물은 가볍게 손으로 두드려 흡수시킵니다. \*10°C 이하의 온도에서 냉장 보관하여 사용하면 더욱 효과적입니다.

**사용할 때의 주의사항**  
Precautions

1) 화장품을 사용 시 또는 사용 후 직사광선에 의하여 사용부위가 붉은 반점, 부어오름 또는 가려움증 등의 이상 증상이나 부작용이 있는 경우에는 사용을 중단하십시오. 2) 상처가 있는 부위 등에는 사용을 지체할 것. 3) 보관 및 취급 시 주의사항: 손이 닿지 않는 곳에 보관할 것. 3년 이상을 경과한 제품에서 보관할 것. 4) 눈 주위를 피하여 사용할 것. 5) 제품 분해의 사용 목적 외에는 사용하지 할 것.

**전성분**  
Ingredients

Water, Butylene Glycol, Glycerin, 1,2-Hexanediol, Centello Asiatico Extract, Water (Distilled Water), Sodium Polyacrylate, Starch, Polyglyceryl-10 Laurate, Portulaca Ceratolo Extract, Betaine, Caprylyl/Capric Triglyceride, Ethylhexylglycerin, Hydrogenated Lecithin, Disodium EDTA, Mela Azadirachta Leaf Extract, Alantoin, Portulaca, Laminaria Japonica Extract, Limbus Davidiana Root Extract, Aloe Barbadensis Leaf Extract, Dioscorea Japonica Root Extract, Viola Mandshurica Flower Extract, Phytosteryl/Octyldecanol/Lauryl Glutamate, Mela Azadirachta Flower Extract, Ceramide NP, Mentha Arvensis Leaf Extract, Phosvelus Radicatus Seed Extract, Corandrum Sativum (Corander) Extract, Popanediol, Hordeum Vulgare Extract, Poincium Vulgare (Fennel) Seed Extract, Crataegus Sativa Flower Extract, Polygonum Fagopyrum (Buckwheat) Seed Extract, Phosvelus Anglica Seed Extract, Elettaria Cardamomum Seed Extract, Sodium Hyaluronate Crosspolymer, Hydrolyzed Glycosaminoglycane, Sodium Hyaluronate, Aloe Barbadensis Leaf Juice, Benzyl Glycol Tocopheryl Hydrolyzed Hyaluronic Acid, Caffeine, Dipotassium Glycyphosphate, Madecassoside, Palmitoyl Tripeptide-5, Hyaluronic Acid, Raspberry Ketone, Ascorbyl Tetraisorbate, Madecassoside, Ascorbic Acid

**총판매처**  
Exclusive Distributor

(주)세븐티글로벌 / 서울특별시 성동구 연무장길76 910호  
SEVENTY ONE GLOBAL CO., LTD. / #910 76, Yeomunjang-gil Seongdong-gu, Seoul, Republic of Korea

**소비자상담실**  
Customer Service

info@71global.co.kr  
본 제품에 이상이 있을 경우 공정거래위원회 고시 "소비자분쟁해결기준"에 의해 보상해 드립니다.



# RECOVERY MASK



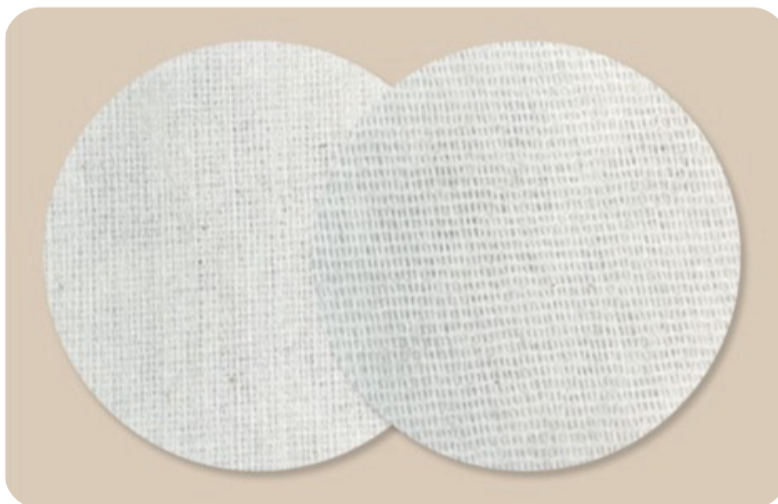
**PACKAGING** 30 ml / sheet

**APPLICABLE AREA** Face

**MAIN INGREDIENTS** Centella Asiatica, Glacial Water, Allantoin, Panthenol, and Ceramide NP

**SUPPORTING INGREDIENTS** Melia Azadirachta Flower Extract, Viola Mandshurica Flower Extract, Dioscorea Japonica Root Extract, Laminaria Japonica Extract, Aloe Barbadensis Leaf Extract, Ulmus Davidiana Root Extract

**MASK SHEET MATERIAL** 100% Unbleached Cotton



Soothing



Moisturizing



Whitening



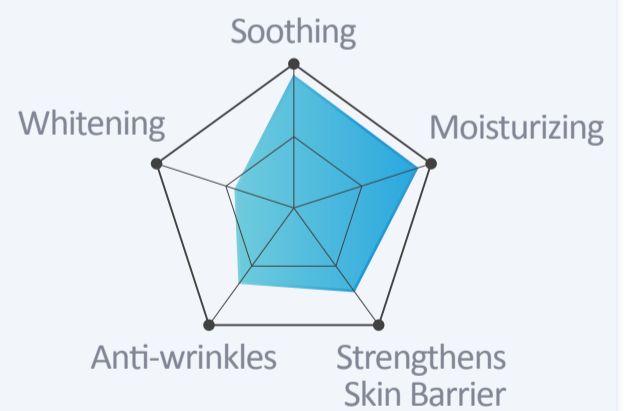
Anti-wrinkles



Strengthens Skin Barrier



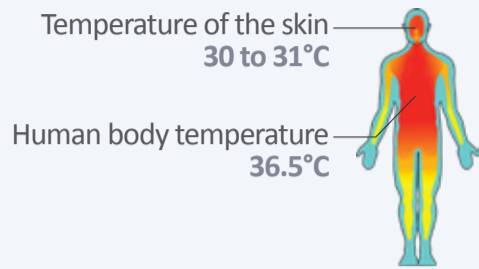
Instantly cools the skin by 9°C



IDEAL FOR  
**POST-OPERATIVE SKIN CARE NEEDS**

*Satisfying all types of sensitive skin issues*

# COMBINATION



## Maintain Cool, Healthy Skin Year-Round

Our skin thrives at a slightly lower temperature than our body's average of 36.5°C.

Keeping your skin at around 30 to 31°C is ideal for its health and appearance.

### Use AOEL® Mask in Hot Summer



Soothes skin exposed to UV rays and hot weather



Minimizes enlarged pores



Rehydrates dry skin often affected by air conditioners

### Use AOEL® Mask in Cold Winter



Nourishes dry skin in chilly weather



Prevents overheating of skin caused by indoor heating and warm air



Provides essential nutrients to skin stressed by temperature fluctuations between indoors and outdoors



After 2 weeks of use, AOEL® Mask can effectively

Reduce Erythema

28%



Relieve Flushing

38.9%



## POST-OPERATIVE

Regardless of the treatment, it's crucial to apply the AOEL® Mask for rapid skin recovery.



After cleansing, apply toner as a primer to prepare the skin for better nutrient absorption from the mask



Carefully open the packaging and remove the mask



Align the holes with eyes, nose, and mouth. Apply it evenly across the face



Remove the mask after 15-20 mins



Gently pat and massage the skin with hands to help the remaining essence absorb

# ADEL<sup>®</sup>

## PRODUCT LINE-UP

### RECOVERY Series

MASK

### FIRMING Series

FACE SOLUTION  
ESSENCE

BODY SOLUTION  
ESSENCE

### SKIN BOOSTER Series

MOISTURIZING HA 10  
AMPOULE

SKIN BOOSTER  
AMPOULE

SKIN REJUVENATING  
AMPOULE

### HEALING Series

HAIR  
SOLUTION ES

SKIN  
REJUVENATING ES  
AMPOULE

### COLLAGEN Series

COLLAGEN-*i*



Age of Elegance