

AJEL[®]

Age of Elegance



● ● **FIRMING** SERIES

PRODUCT OVERVIEW



Face Solution

PACKAGING

- 10 ml × 5 Vials

MAIN INGREDIENTS

- Sodium Deoxycholate
- L-Carnitine
- Caffeine
- Juglans Regia (Walnut) Seed Extract
- Aesculus Hippocastanum (Horse Chestnut) Extract

APPLICATION AREAS

- Jaw Lines
- Cheeks
- Around the Lips
- Double Chin



Face Lifting
Firming Product



Body Solution

- 10 ml × 5 Vials

- Sodium Deoxycholate
- L-Carnitine
- Caffeine
- Epidermal Growth Factor
- Sodium DNA

- Neck and Shoulder
- Under Arms
- Abdomen
- Love Handle
- Outer and Inner Thighs



Body Contouring
Firming Product

 **Origin of country** South Korea

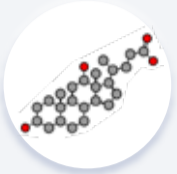
 **Shelf life** 2 years

 **Storage condition** 2°C to 25°C



INGREDIENTS

KEY INGREDIENTS



Sodium Deoxycholate

- Sodium deoxycholate is an FDA-approved fat-dissolving substance since 2015, demonstrating its safety and effectiveness
- Sodium deoxycholate is a natural component found in the human body, primarily produced in the liver, and is involved in fat emulsification for intestinal absorption
- Sodium deoxycholate disrupts cell membranes in adipocytes, leading to the breakdown of fat cells in adipose tissue
- While sodium deoxycholate primarily targets fat cells, it may also affect adjacent non-fatty tissues to some extent due to its relatively nonselective nature



L-Carnitine

- L-Carnitine assists the body in converting fat into energy
- L-Carnitine transports fatty acid chains into the mitochondrial matrix, enabling cells to break down stored fat reserves & generate energy



Caffeine

- Caffeine can prevent the accumulation of fats and stimulate lipolysis by inhibiting phosphodiesterase (PDE), which reduces the breakdown of cyclic adenosine monophosphate (cAMP) in fat cells and lowers the lipolytic threshold



CHOOSING SUITABLE OPTIONS

The formula of fat dissolving products of each brand is different, the more expensive the product is not necessarily the better. Most importantly is to choose the right type of product, a good option for removing the unnecessary fat, and also shrink down the size of the fat cells

COMMON INGREDIENTS IN FAT DISSOLVING PRODUCTS



Products contain Sodium Deoxycholate

Sodium deoxycholate is the only fat-dissolving ingredient certified by the US FDA, with popular brands in the market like Allergan's Kybella. It breaks down fat by destroying cell membranes, but should not be applied in excessive doses to a target area

Common side effects include pain, swelling, and other potential side effects



Products contain Phosphatidylcholine (PPC / Lecithin)

PPC is the most common ingredient found in fat-dissolving products, and it also carries the highest probability of side effects

Common side effects include redness, stinging, fat necrosis, skin necrosis, and skin depression



Products contain Steroids

A combination of Sodium deoxycholate and Triamcinolone acetonide can effectively prolong the duration of fat-dissolving effects.

However, if not administered by a professional doctor, patients may not only fail to achieve satisfactory results but also experience symptoms such as menstrual disorders for women, bleeding, dizziness, and more

COMPARISON

LIPOSUCTION SIDE EFFECTS



Asymmetry

The human body is bilaterally symmetrical, making it challenging to ensure symmetrical removal of fat from both sides, resulting in asymmetrical contours



Fat clots



Skin laxity

Overly aggressive liposuction can eliminate the fat layer between the skin & muscles, leading to depressions and adhesion deformations



Surface Irregularities

Excessive fat removal does not produce natural-looking and attractive cosmetic results. The abdomen is the most common site for such issues, with more complex sites including the outer and inner thighs and the posterior upper leg



Scars

Common incisions for liposuction are made under the arms, around the belly button, and below the abdomen. Poorly placed incisions or over-liposuction near incisions can result in easily visible scars. Inadequate self-recovery or postoperative care may also leave scars

COMPARING FAT DISSOLVING PRODUCTS AND WEIGHT LOSS PENS



FAT DISSOLVING INJECTION

EFFECTS



Fat dissolution



Contouring



Quick results



Shaping and toning



Multiple options



Shorter recovery time



Reduction in the number of fat cells



Affordable pricing

DOWNSIDES

- Not suitable for large areas of fat
- May require a large dose
- Excessive dosing can lead to sagging and loose skin
- Mild swelling may persist for up to 3 days



WEIGHT LOSS PEN



Increased satiety



Weight loss



Composed of the main ingredient for diabetes treatment



Recommended for people with a BMI over 30 and mild diabetes

- Self-administered
- May cause nausea, vomiting, diarrhea, constipation, dizziness, headache, insomnia, and other symptoms
- Higher cost
- Not suitable for everyone

FAT DISSOLVER

TARGET AREAS FOR CONCERN



Fat dissolving treatments are effective in reducing fat in specific areas that are resistant to exercise, such as the double chin and cheeks



Fat dissolving treatments are suitable for skin with a higher scarring potential due to their low-risk and minimally invasive nature. Consult with a doctor to adjust the dosage before treatment



Belly fat and thigh fat can be some of the most stubborn to lose, even with intense workouts and strict diets. Fat dissolving treatments offer a long-term solution for eliminating these stubborn fat deposits

EFFECTIVENESS-INFLUENCING FACTORS



Vitamins



Mineral balance



Energy balance



Number of mitochondria



Level of Catecholamine



Oxygen levels



Lipase enzymes



Liver and muscle enzymes

FAT DISSOLVING INJECTIONS Q&A



Q: How long does it take to recover from a fat dissolving treatment?

A: Fat dissolving treatment requires minimal to no downtime, allowing most patients to return to their normal activities within one day. Slight swelling may persist for about three days after treatment



Q: How long does the effect of fat dissolving treatment last?

A: While it can take a few weeks to fully break down the fat cells in the targeted areas, this treatment removes specific fat cells that will not return. However, it won't prevent new fat cells from storing fat in the same area. As a result, maintaining a healthy diet and exercise is essential



Q: How long does a fat dissolving session take?

A: A fat dissolving treatment is a quick and straightforward procedure, typically taking around 5 to 10 minutes for each targeted area



Q: Why are fat-dissolving products usually recommended 3 to 5 times as a course of treatment?

A: Results are typically visible after 1 treatment. However, for long-term effectiveness and to consolidate the effect, it's often recommended to undergo 3 to 5 sessions as a course of treatment



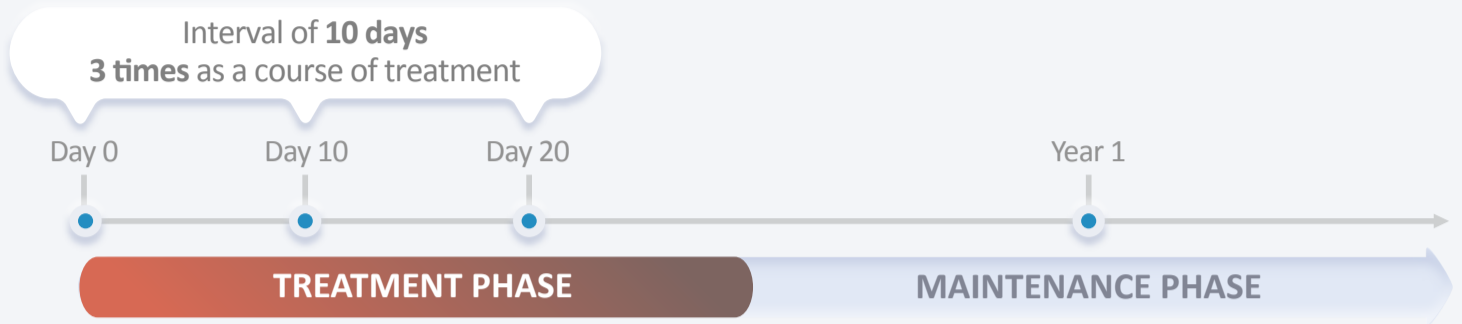
Q: Why do some individuals fail to achieve satisfactory results after 5 treatments?

A: Typically, the satisfaction rate is over 85%. Abdominal circumference can be reduced by 2 to 3 cm, thigh circumference by 1 to 2 cm, and calf circumference by 1 cm. If the desired effect is not noticeable, it could be due to inadequate follow-up care instructions or weight gain

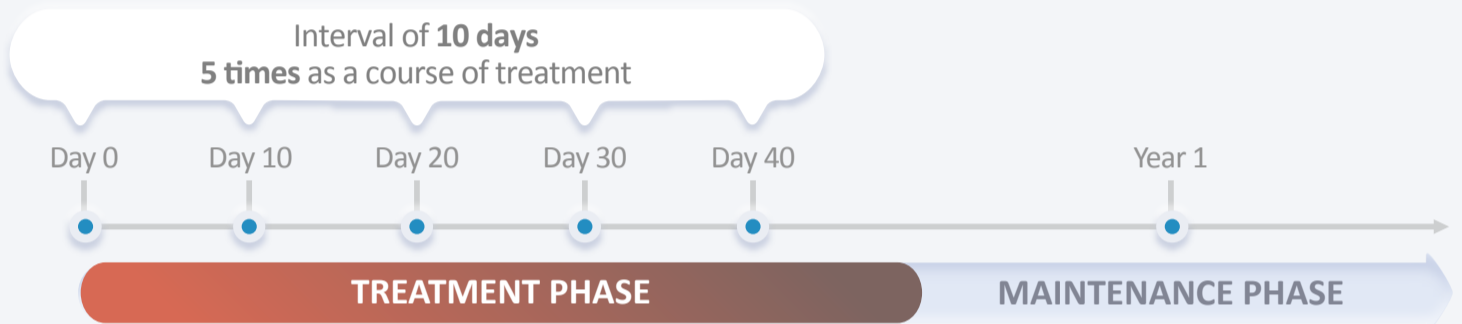
INSTRUCTION

APPLICATION CYCLE

Moderate Fat Deposits



Severe Fat Deposits



NEEDLE SELECTION



Sharp Needle

Suitable for small-dosage injections and moderate fat deposits

Recommended needle sizes : 30G 4mm (for intramuscular injections at a 90° angle)
30G 13mm (for subcutaneous injections at a 45° angle)



Cannula Needle

Suitable for large-dosage injections and treating larger areas
Causes lesser incision, distributes the solution evenly, and reduces the likelihood of swelling

Recommended needle size : 23G 70mm

ADVANCED TREATMENT

Recommended Devices for Optimal Effects



SHURINK

High-Intensity Focused
Ultrasound (HIFU)



ULTHERA

Micro-Focused
Ultrasound (MFU)



INMODE

Radio-Frequency (RF)
based technology



LINEARFIRM

Linear Focus
Ultrasound (LIFU)

PROCEDURE:

Initiate with the
device application



Followed by a
fat dissolving injection



Conclude with a
gentle massage

Recommended treatment course : Three sessions at two-week intervals

INSTRUCTION

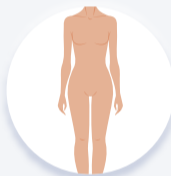
INSTRUCTION FOR USE



Face

Injection depth : 4 mm (fat layer)
Injection point : 1 cm interval, 0.3 ml each point

* Do not exceed 20 ml in a single application on the face



Body

Injection depth : 6 to 7 mm (fat layer)
Injection point : 2 cm interval, 0.5 ml each point

* Do not exceed 50 ml in a single application on the body

* Do not exceed 100 ml in a single application for the entire body

POSTOPERATIVE CARE



Maintain a balanced diet; avoid overeating



Engage in light exercise when you're ready



Gently massage the treated areas



Avoid high-temperature environments like saunas

PRECAUTIONS



Avoid use during menstrual periods, lactation periods, pregnancy preparation, or pregnancy



Refrain from water exposure, makeup, and strenuous exercise for at least 24 hours after treatment



Not suitable for individuals with a history of stroke, blood disorders, heart disease, cancer, or diabetes



Do not apply any medications or irritating substances to treated areas and surroundings for at least 72 hours post-treatment



Avoid use on damaged or injured skin, areas with lymph inflammation, or acute/chronic skin conditions



Abstain from alcohol and smoking after treatment. Consume a healthy, light diet, avoiding excessive spiciness and sodium, and refrain from overeating. Engage in light exercise, and ensure proper hydration

ADEL[®]

PRODUCT LINE-UP

RECOVERY Series

MASK

FIRMING Series

FACE SOLUTION
ESSENCE

BODY SOLUTION
ESSENCE

SKIN BOOSTER Series

MOISTURIZING HA 10
AMPOULE

SKIN BOOSTER
AMPOULE

SKIN REJUVENATING
AMPOULE

HEALING Series

HAIR
SOLUTION ES

SKIN
REJUVENATING ES
AMPOULE

COLLAGEN Series

COLLAGEN-*i*



Age of Elegance